

# MU Guide

PUBLISHED BY UNIVERSITY EXTENSION, UNIVERSITY OF MISSOURI-COLUMBIA

## Pollinating Fruit Crops

Michele R. Warmund  
Department of Horticulture

Most fruit crops require pollination to ensure that fruit sets. Pollination is the transfer of grains of pollen from the anthers (male floral part) to the stigma (female floral part) of a flower (Figure 1). Pollen grains get caught on the sticky surface of the stigma, germinate and produce a tube that grows down the style and unites with the female cell in the ovary. This union is called fertilization. After fertilization occurs, seeds develop and the fruit enlarges.

Honeybees are the most important natural carriers of pollen. As the bee flies from flowers on one tree to those on another in the orchard, pollen sticks to its body hairs. The bee rubs off the pollen onto the stigma and transfers additional pollen from the anthers as it visits the flowers. A honeybee may visit 5,000 flowers a day. Home plantings of fruit crops generally have enough wild bees for adequate pollination. However, in commercial orchards, beehives are generally placed in the orchard when the trees are in bloom to enhance pollination and fruit set. In some fruit crops, pollen is also transferred by the wind.

Each fruit crop, and even specific varieties within individual fruit crops, has distinct requirements for pollination. The following terms are used to describe the pollination characteristics of fruit crops:

**Cross-pollination** — the transfer of pollen between two different species or varieties

**Self-pollination** — the transfer of pollen within a single plant or among several plants of the same variety

**Self-unfruitful or self-sterile** — plants in which very little fruit will set

**Self-fruitful** — varieties that set fruit with their own pollen

**Cross-unfruitful** — varieties that will not set fruit even when cross-pollinated

**Intersterile** — neither of two varieties will fertilize the other

**Pollinator** — an agent (bees, insects, people) of pollen transfer

**Pollinizer** — the plant species or variety that produces the pollen

To ensure that fruit sets, the pollination require-

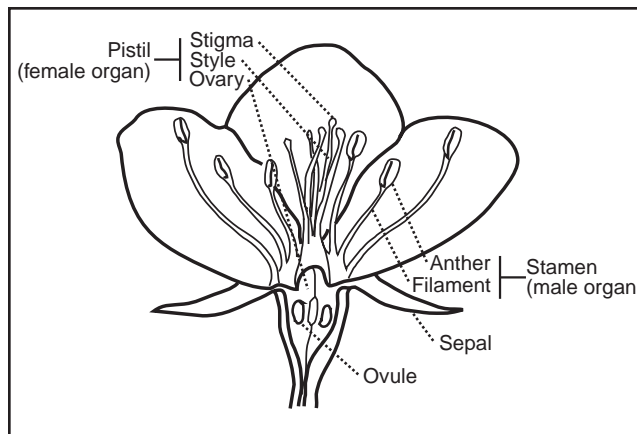


Figure 1. Diagram of apple flower.

ment of the varieties of a given fruit crop should be evaluated before planting.

### Apple pollination



All varieties of apple trees should be cross-pollinated with another apple or crabapple variety. To attain the best fruit set on apple trees, the king blossom (the largest and first one to open) in the flower cluster must be pollinated. Thus, the bloom periods of the pollinizer and the king blossom of the apple tree must overlap.

In backyard plantings, two **semidwarf** apple varieties that bloom at the same time should be planted within 50 feet of each other. Two **dwarf** apple varieties with similar bloom periods should be spaced less than 20 feet apart to ensure the transfer of pollen between trees (Figure 2).

Although some apple varieties, such as Lodi, Liberty, Empire, Winesap, Jonathan, Jonagold, Gala, Golden Delicious, Rome and Granny Smith may be listed as self-fruitful, they will set more fruit on an annual basis if they are cross-pollinated. Additionally, some apple varieties, such as Winesap, Stayman, Mutsu and Jonagold, produce sterile pollen and therefore cannot be used to pollinate other apple varieties. Many nursery catalogues include pollination compatibility charts (Figure 3) or recommend good apple varieties to use as pollinizers.

Manchurian crabapple, with profuse white flowers, is commonly used to pollinate early- to mid-blooming apple varieties, while Snowdrift crabapple is used for mid- to late-blooming apple varieties (see Figure 2). When using a crabapple tree as a pollinizer, it should be planted within a similar distance to an apple tree as listed above.

In situations where a solitary apple tree is planted, branches of open fresh blossoms of another apple or crabapple pollinating variety can be placed in buckets of water and hung in the tree. Another way to ensure pollination where a single tree is planted, is to top-work or graft another apple variety onto the existing tree. To top-work an apple tree, 6- to 8-inch sections of branches of one apple variety are cleft-grafted onto terminal branches of another variety. Refer to MU publication G 6971, *Grafting*, for information on top-working trees using cleft grafts.

In commercial apple plantings, a row of pollinizer trees is often planted between every four rows of the main variety of trees (Figure 4). If pollinizers are placed within the row, every fifth semidwarf tree is a pollinizer and each pollinizer is offset in adjacent rows to stagger them throughout the orchard block. In high-density plantings of dwarf trees (5 to 6 feet between trees within the row), apple or crabapple pollinizers may be planted between eight to ten trees of another variety in the row.

Beehives are generally placed in commercial apple orchards as the king flowers open. If hives are brought in before this time, bees may forage flowers of other broad-leaved plants instead of the apple blossoms. For this reason, dandelion flowers should be removed by mowing or by herbicide treatment before hives are placed in the orchard. In orchards where semidwarf trees are planted, one hive of a medium-strength colony (15,000–20,000 bees) is generally sufficient per acre. Two hives per acre are used in high-density orchards where dwarf apple trees are planted. Extra strong colonies of as many as 50,000 bees have been effective in pollinating four acres of semidwarf trees under ideal climatic conditions.

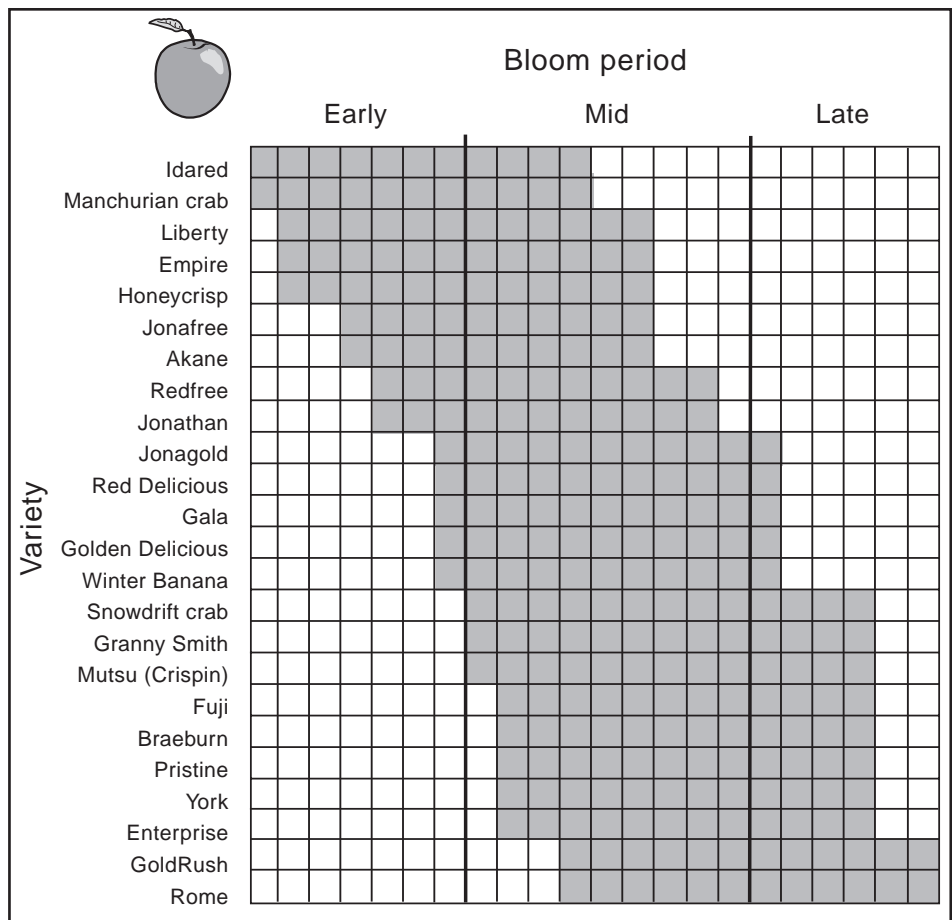


Figure 2. Apple and crabapple bloom periods. The shaded area represents the time of bloom.



### Pear pollination

Most pear varieties are self-unfruitful. However, nearly all pears are suitable pollinizers for other varieties that bloom at the same time. One exception is Seckel, which is not a good pollinizer for Bartlett. Even though Anjou, Bartlett and Kieffer are partially self-fruitful, they should be cross-pollinated to produce heavy and regular crops. Pear flowers produce only a small amount of nectar, which is low in sugar. For this reason, more pollinizers and bees are needed for pears than for any other tree fruit.



### Apricot, peach, nectarine, and sour cherry pollination

Nearly all common varieties of apricot, peach, nectarine and sour cherry are self-fruitful (do not require cross-pollination). However, the J.H. Hale peach is not self-fruitful but can be pollinated by almost any other peach variety with a synchronous bloom period except Elberta. Self-unfruitful varieties of apricots include Perfection, Riland and Rival. These self-unfruitful varieties can be pollinated by any other apricot variety.

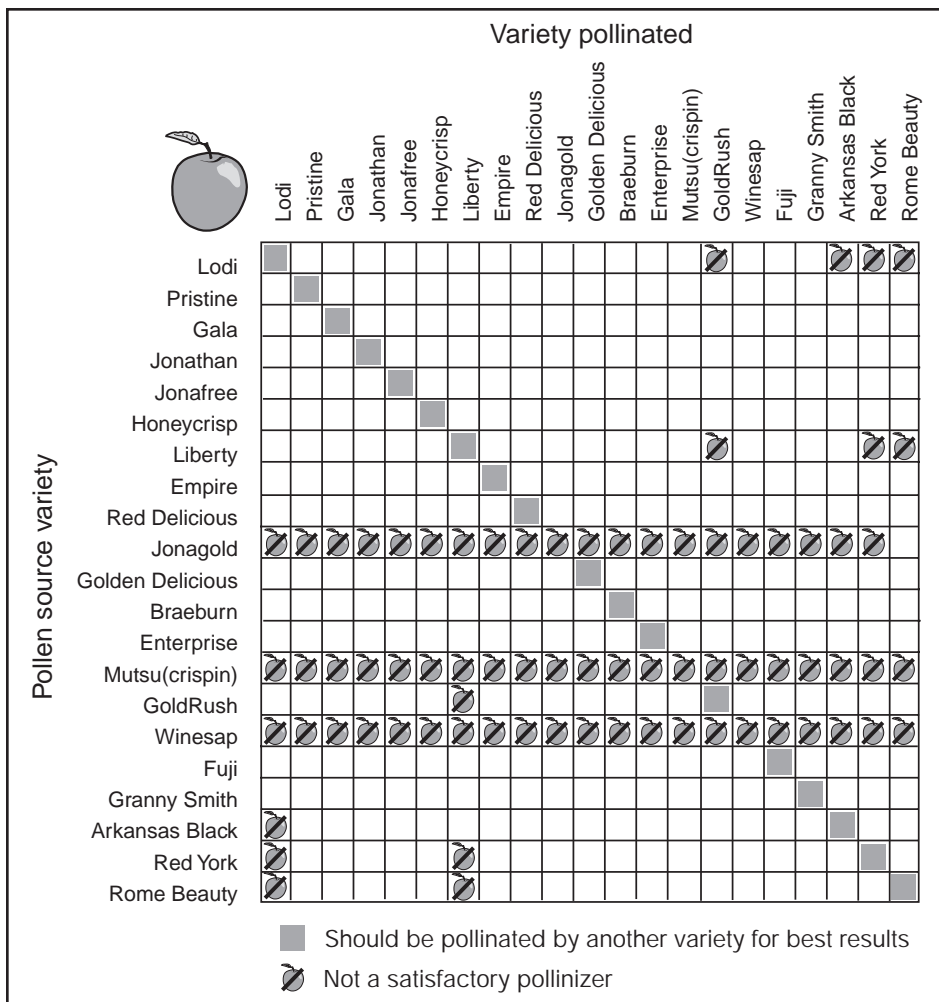


Figure 3. Apple pollination. Except where indicated, varieties listed on the left can be used as reliable pollinizers for cross-pollination.

## Pollination of small fruit crops

Grape, strawberry, raspberry, blackberry, gooseberry and currant plants are all self-fruitful. However, blueberry varieties require cross-pollination for fruit set. Thus, varieties that bloom at a similar time should be placed within rows or planted in adjacent rows.

## Pollination failures

Poor fruit set or low yields are often caused by poor pollination or frost during the period when trees are in bloom. Some of the common reasons for pollination problems can be the lack of a suitable variety for cross-pollination. Pollination failures also occur when bloom periods of two varieties used for cross-pollination do not overlap. Poor climatic conditions during bloom can also adversely affect pollination. Bees travel shorter distances during cool (below 50 degrees F), rainy or windy weather. In areas where native bees have been infected with tracheal or varroa mites, growers should

## Sweet cherry pollination

Stella, Lapins and Starkrimson are self-fruitful. Most other varieties of sweet cherries require cross-pollination. Several varieties are intersterile and cannot fertilize each other. For example, Bing, Lambert and Royal Ann (Napoleon) will not pollinate each other. Refer to Figure 5 and nursery catalogues for pollinizer recommendations. In commercial plantings, beehives should be placed in the orchard on the first day of bloom.

## Plum pollination

Most European plums (e.g., Bluefre, Blue Ribbon, Earliblue) either benefit from or require cross-pollination from another European variety. However, European or prune-type plums, such as Stanley and Damson, are self-fruitful.

Japanese plums, such as Santa Rosa, Burbank, Redheart, Shiro, Methley and Ozark Premier, require pollination from another Japanese or an American-Japanese hybrid. Follow nursery recommendations for suitable pollinizers.

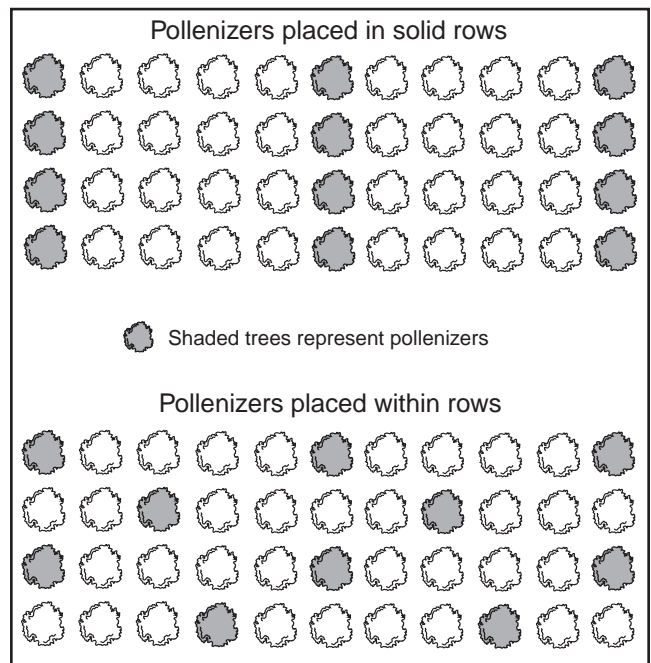


Figure 4. Alternative planting plans to ensure cross-pollination of apple trees.

rent beehives from commercial beekeepers that have strong colonies. Do not spray carbaryl (Sevin) or any other insecticide that could harm bees during the bloom period. To prevent bees from foraging flowers of dandelions or other weeds, mow the orchard or control the weeds with a herbicide before the fruit plants bloom. Wait to move the beehives into the orchard until the fruit crop has started to bloom and remove the hives as flowers stop blooming.

Beehive inserts can also enhance pollination in commercial orchards. Inserts are placed at the hive entrance and filled with pollen from a pollinizer variety. Pollen can be purchased from a commercial supplier and should be kept cool and out of the sun until it is placed in an insert. Use a teaspoon of undiluted pollen every several hours. A total of 1.4 ounces (40 grams) of pollen per acre is usually recommended.

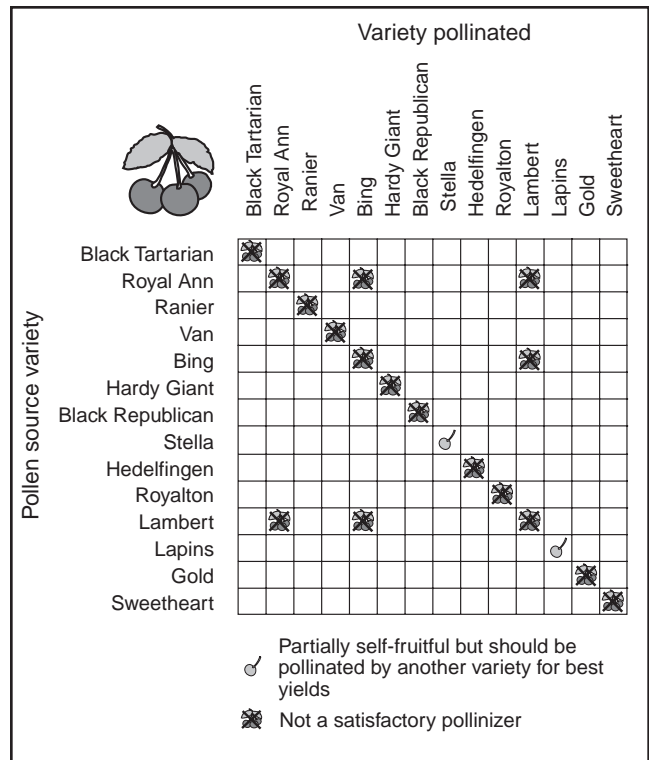


Figure 5. Cherry pollination. Except where indicated, varieties listed on the left can be used as reliable pollinizers for cross-pollination.

## Notes